

# WELCOME IPFO OFFICIALS

ASSOCIATION MEETING II - 2014

INNER PIEDMONT FOOTBALL OFFICIALS





## 5 GOALS & EXPECTATIONS FOR OUR ASSOCIATION

**Goal - Establish the most respected football officials association in NC.**

**Goal - Provide our schools with a superior officiating product.**

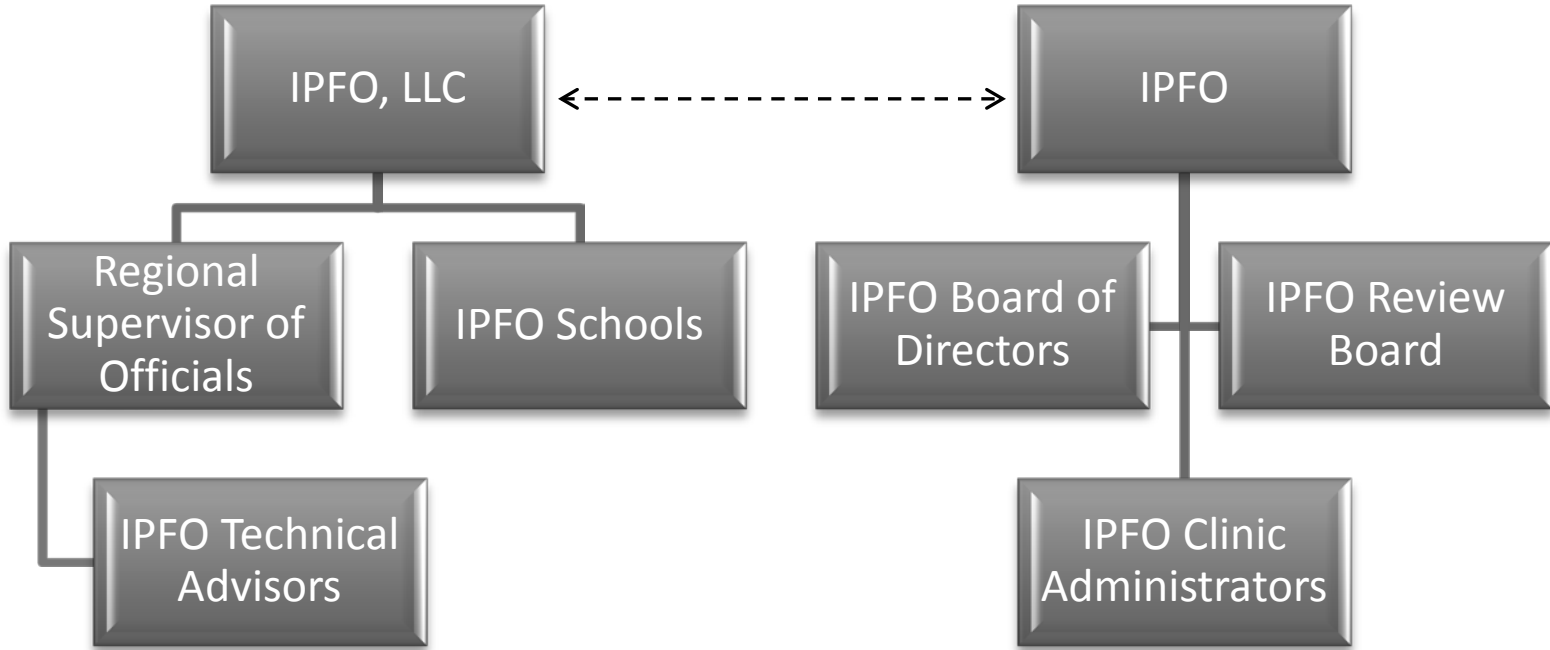
**Goal - Provide our officials with the tools and resources necessary to succeed.**

**Expectation - Professional approach to our avocation.**

**Expectation - Exercise personal responsibility & accountability.**



**Association Structure & Relationships**



**Association Financial Structure**

**School Booking Fees**



**Membership Dues**



**Scrimmage Fees**



School Booking Fees	Association Dues & Scrimmage Fees
Regional Supervisor of Officials	Arbitrator License Fees Clinic Administrators Misc. Expenses Technical Advisors Taxes Training Web Site



## Balance Sheet

Inner Piedmont Football Officials, LLC  
Fiscal Year to Date Ending July 31, 2014

### ASSETS

#### Current Assets

Checking/Savings  
Peoples Bank 24,765.94  
Total Checking/Savings 24,765.94

#### Accounts Receivable

Accounts Receivable 350.00  
Total Accounts Receivable 350.00

**Total Current Assets 25,115.94**

**TOTAL ASSETS 25,115.94**

### LIABILITIES & EQUITY

#### Equity

Retained Earnings 4,279.01  
Net Income 20,836.93  
Total Equity 25,115.94

**TOTAL LIABILITIES & EQUITY 25,115.94**

## Constitution & By-Laws

The IPFO Constitution & By-Laws are posted on the IPFO web site. Please take time to review the contents so you are familiar with how your association functions.

[www.ipfo.us/policies](http://www.ipfo.us/policies)

## Profit & Loss

Inner Piedmont Football Officials, LLC  
Fiscal Year to Date Ending July 31, 2014

### Ordinary Income/Expense Income

Booking Fee - JV Football 4,500.00  
Booking Fee - Varsity Football 6,125.00  
Membership Dues 12,013.00  
Scrimmage Fees 250.00

**Total Income 22,888.00**

**Gross Profit 22,888.00**

### Expense

Advertising and Promotion 448.00  
Computer and Internet Expenses 83.88  
Insurance Premium Expense 155.00  
Office Supplies 56.48  
Postage and Delivery 108.71

**Total Expense 852.07**

**Net Ordinary Income 22,035.93**

### Other Income/Expense

#### Other Expense

Taxes  
Federal Income Tax 642.00  
Franchise Tax 237.00  
NC Income Tax 320.00  
Total Taxes 1,199.00  
Total Other Expense 1,199.00  
Net Other Income -1,199.00

**Net Income 20,836.93**



## Board of Directors

### Regional Supervisor of Officials:

Wally Todd

### School System Administrator:

Richard Armstrong, Jr.

Athletic Director, Iredell-Statesville Schools

### School Administrator:

Marc Payne

Athletic Director, Ashe County High School

### Head Coach:

Matt Beam

Newton-Conover High School

### Head Coach:

Tom Harper

Fred T. Foard High School

### Official – North/West Region (2016):

Mike Borders

Bi-County Clinic

### Official – North/West Region (2015):

Eddie Simmons

Boone Clinic

### Official – South/East Region (2016):

Burt Broadway

Gastonia Clinic

### Official – South/East Region (2015):

Darryl Shope

Statesville Clinic

### \*\*Secretary/Treasurer:

Terry Cody

Hickory Clinic

## Clinic Administrators / Grievance Committee

Chris Eldreth - Chairman

Dean Burgess

Jim Coleman

Steve Culbertson

Chris Huskey

Rick Curtis

## Technical Advisors

Bill Cline

Gary Harding

Tony Jordan

Linc Pauley

Scott Tutterow

David Williams

Billy Alton - Advisor

## Review Committee

Don Bias – Chairman

Dusty Haynes

Tom Horner

Crisp Lipscomb

## Education Committee

Linc Pauley – Chairman

Michael Carroll

Dewayne Cuthbertson

Rick Curtis – Webmaster



Board members will serve two-year terms, alternating each year.

**No elections to be held this year.**

Official's Recognition

**2013 - Championship Game Assignments**

**NCHSAA Class 4AA Game**

**Referee – Don Bias**

**Umpire – Mark Gay**

**Head Linesman – Steve Wellmon**

**Line Judge – Terry Prince**

**Field Judge – Roger Price**

**Side Judge – Crisp Lipscomb**

**Back Judge – Jeremy Fowler**

**NCISAA Division 3 Game**

**Referee – Jim Coleman**

**Umpire – Brett Carter**

**Head Linesman – Dauntae Finger**

**Line Judge – Lindsay Lattimore**

**Back Judge – Tony Parker**

**ECO – Jackie Thomas**

Scholarship Awards

The scholarship program will be scrapped due to the size of our organization. As the final disbursement to this program, three - \$300.00 scholarships will be awarded after the meeting is completed.

2015 Association Meeting

The 2015 IPFO Association Meeting will be held on Saturday morning, August 1 in the Hickory area and will be an outdoor workshop.

Dale Sherrill of the Hickory Clinic will serve as the Coordination Director for this meeting.

There will be several stations set up within the football field for the purpose of providing simulations covering mechanics, protocol, and intangibles that separate exemplary from ordinary officials. The topics will range from coin toss protocol to identifying concussion symptoms and handling. We are seeking the “Best of the Best” at their respective positions to assist in conducting this clinic. Please contact Dale Sherrill if you would like to contribute to this event or if you have a suggestion that you would like to see presented.



Week	Varsity	JV
1 (8/22)	20 (109)	12 (61)
2 (8/29)	23 (127)	15 (76)
3 (9/5)	19 (102)	18 (93)
4 (9/12)	23 (125)	13 (65)
5 (9/19)	16 (88)	13 (69)
6 (9/26)	**24 (135)	19 (97)

Week	Varsity	JV
7 (10/3)	21 (116)	21 (109)
8 (10/10)	*23 (125)	***22 (121)
9 (10/17)	23 (124)	22 (105)
10 (10/24)	**25 (138)	21 (104)
11 (10/31)	24 (129)	22 (114)
12 (11/7)	23 (128)	21 (106)

**136 Varsity Officials – 23 JV Officials**

**9/26 - 4 Varsity Officials have blocked this date (9 ECO's)**

**10/24 - 7 Varsity Officials have blocked this date (14 ECO's)**

**\*ASU Homecoming Weekend (Boone looks available!!!!)**

**\*\*Game at NCSD is Included (Thursday 9/25; Saturday 10/25)**

**\*\*\*Includes Monday game at SLCA on 10/13**



## Game Information

483 Games (+1 from 2013)  
264 Varsity Games  
219 JV Games

2,564 Assignments (-4 from 2013)  
\$183,098.00 in Official's Fees  
\$180, 880.00 in 2013 (Including Playoffs)

159 Registered Officials (-8 from 2013)  
Varsity - 136 officials (1 on medical)  
JV Only - 23 officials

### Game Fees:

Varsity - \$76.00 ea.

JV - \$66.00 ea.

Playoff - \$86.00 ea.

Southlake Christian Academy Freshman / JV – Three Man Crew with Clock - \$76.00 ea.

**\*\*All clock operators will get a full game fee for both JV & varsity.**

### Location Notices:

Community School of Davidson – Home games at Hopewell HS, William Hough HS & North Mecklenburg HS

Pine Lake Prep - Home games will be played at Hopewell HS, NW Cabarrus HS

### Confirm Game Dates & Times:

Highland Tech Varsity – 7:00PM start on 9/5

Southlake Christian Fresh./JV – 4:00PM start on 9/26; all others at 4:30PM; Varsity - 7:00PM start on 9/26 & 10/24

NC School for the Deaf – 6:00PM start on 9/25; 2:00PM start on 10/25

## Assigning

If you looked at the weekly games chart carefully, you saw that there are plenty of games and assignments for everyone. We average 23 varsity and 22 JV games weekly. Every effort will be made to have the games scheduled well in advance.

Assignments will be “regionalized by clinic” for JV football as much as possible, however regions are not clinic specific. Please inform me if I’ve overlooked your assignment history and accidentally booked you to the same two teams for both the JV and varsity games during the week. I may have to waive this if postponements occur.

Varsity assignment travel will be “ad infinitum”. Crews may be assigned as a “clinic crew” or an “association crew.” Game locations, position needs, games declined by other officials, and game importance may dictate the use of an “association crew” rather than a “clinic crew”. Every effort will be made to group officials together for travel, but in some cases, it may not be possible. All assignments are filled with a purpose, not just slapped together. You have the ability to decline the game if you believe it to be a burden on you. I’m very cognizant of the number of games each official receives during the season. Everyone will have a night or two off during the season, either JV, varsity or both.

There will be cases when experienced officials will be assigned as clock operators so younger officials can gain experience at the varsity level. Newer Referees will be operating the clock for the purpose of observing the different styles of other Referees as they develop into the position.

JV OFFICIALS – You are eligible for varsity clock assignments, so keep your close out dates current.





## Arbiter Use, Game Acceptance & Notification

**BE SURE** to keep closeouts up to date. Be sure to close out all days you can't work, not just Thursdays or Fridays, include Saturdays and Mondays.

**REPORT** any school conflict to the RSO so you're appropriately assigned.

**PLEASE** insert your picture in your profile on the Arbiter so I can put a name with a face. (So everyone can identify each other.)

**BE SURE** that your contact information is correct and up to date, including social security number. If you elect not to post your SSN on your profile, it will be your responsibility to contact the home school so you can get paid.

**ACCEPT/DECLINE** games must be completed by Sunday evening at 6:00PM, the week end before the game or it will be revoked and reassigned.

**DECLINED** games must have a reason given to insure that the official has not accidentally entered the wrong accept/decline tab.

**NOTIFICATION** to the Referee must be made no later than 96 hours before game time. (JV-Sunday, Varsity-Monday)

1. Notification can be made in the form of phone call, email or personal contact.

2. An email notification must be acknowledged by the Referee within 24 hours or the notification is considered invalid.

3. The Referee is to try to contact the official by phone if no notification is made. If that official cannot be located, the Referee shall notify the RSO and the official will be replaced. He will also forfeit his next scheduled game assignment in kind.

**RAIN THREAT:** Referees - contact the school after 2:00PM and talk directly to the AD, Principal, or Head Coach. If postponed, contact the RSO first, the crew second. Postponed games will be posted on the IPFO web site when we are notified.

**POSTPONEMENTS:** You are still responsible for your assignment. If you cannot honor the commitment when rescheduled, please notify the RSO immediately so a replacement can be secured, even if you closed out the date previously on the Arbiter.

## Arrival at School, Dress, Pregame, Post-Game

**OFFICIALS** are to be at the school no later than 90 minutes before scheduled kick-off with pregame conference to begin no later than 60 minutes before kick-off.

**HOSPITALTY** differs from school to school. Be sure to leave the dressing area in the same or better condition as you found it.

**NO FACIAL HAIR** other than a moustache.

**NO SUNGLASSES** are to be worn. Tinted prescription glasses are permitted.

**T-SHIRTS** worn under the shirt shall be black if visible and socks shall be black and "crew" length at a minimum.

**OFFICIALS** street attire to and from the game shall be "business casual". (Shirt with collar, slacks, leather shoes, socks)

**OFFICIALS** are encouraged to wear a sports coat during playoffs, but will be mandatory for 4<sup>th</sup> round and Championship games.

**JACKETS** may be worn onto the field during cold weather, but must be removed prior to kickoff and during play.

**IF NEEDED**, a standard hand towel shall be used by Umpires.

**PENALTY** flags, if placed in any pocket, shall not be visible.

**WHEN** meeting with head coaches, the Referee & Umpire shall introduce the wing official responsible for that sideline. The wing should then retreat back to his pre-game duties.

**IF POSSIBLE** and time permitting, the crew should gather together at or near the far / opposite 20 yard line for the playing of the National Anthem.

**OFFICIALS** are to gather together following the game on the field, then trot off the field as a group. Do not walk off, do not discuss the game with anyone.

**AN OFFICIAL** that either ejects or disqualifies a player or coach is responsible for reporting the incident to the NCHSAA within 24 hours following completion of the game. A \$50.00 fine is imposed by the NCHSAA if not completed on time.

2014 & 2015 NFHS Game Officials Manual Changes (NCHSAA)

1. The Line Judge will be back with the Back Judge on all try and field goal attempts. (Pg.47)
2. Wing officials will signal on and off the line on all plays.
3. The Back Judge shall bring the ball up the middle of the field to the next free kick line after a score.

2014 & 2015 NFHS Game Officials Manual Changes (IPFO)

Pg. 9 – I. CREW ASSIGNMENTS

- D. Line Judge: Will accompany the Linesman and assist checking line-to-gain equipment and meet crew.
- E. Back Judge: Secure game balls for referee’s approval and meet with ball persons.

Pg. 25 – UMPIRE (KICKOFF)

Pg. 26 – LINESMAN (KICKOFF)

Pg. 27 – LINE JUDGE (KICKOFF)

FOR ALL – B. After Kick:

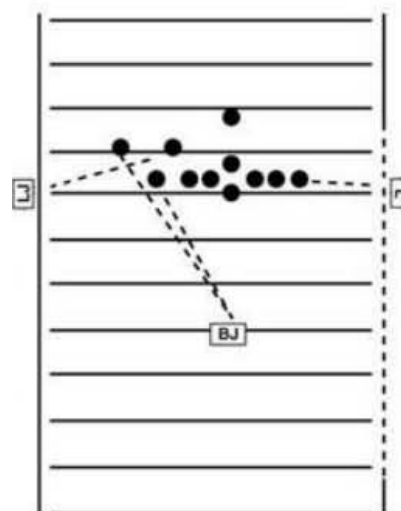
When kickoff goes outside the opposite hash mark:

- a. Move down sideline until certain there will be no reverse or counter.
- b. Observe action of other players in vicinity of runner. If necessary, move in from the sideline no further than the bottom of the numbers.
3. Serve as clean-up behind, to side of, and around runner.



Pg. 32 – TRIPS TO ONE SIDE (THREE RECEIVERS)

When the formation is as shown at the right, showing “trips”, the BACK JUDGE has the two outside receivers. LINE JUDGE is responsible for the action on or by the inside eligible receiver. HEAD LINESMAN would have primary coverage on the end who is on his/her side and would then have the first back out of the back field to his/her side.



Pg. 38 – LINESMAN & LINE JUDGE (RUNNING PLAY)

1 - g – When ball goes to opposite side:

- (1.) Move down sideline until certain there will be no reverse or counter.
- (2.) Observe action on linebackers and backside pursuit. If necessary, move in from the sideline no further than the bottom of the numbers.



**Coin Toss – Opening Game (Entire Protocol on IPFO website)**

If the coin toss winner has been pre-determined:

The Back Judge will bring the kicking team ball to the hash. (Back to Clock) After the Referee aligns the captains and signals the winner's option, the Back Judge will briskly place the football at K's 40 yard line, then return to the officials huddle, along with the Line Judge when the captains are dismissed.

If the coin toss winner is decided on the field:

The Back Judge and Line Judge will bring a football from their team's sideline. After the Referee aligns the captains and signals the winner's option, in unison the BJ and LJ shall properly position his football:

The official holding K's ball will briskly place the football at K's 40 yard line.

The official holding R's ball will briskly take the ball to the sideline.

Both officials plus the Head Linesman will then return to the officials huddle when the captains are dismissed.

**Coin Toss – Overtime**

Each Captain shall be accompanied by his Head Coach for the OT coin toss so there is no option misunderstanding and the rules are explained.

The Back Judge and Line Judge shall execute the OT coin toss in the same manner as the coin toss that opens the game when decided on the field. In this case, the ball will be placed on the 10 yard line by the appropriate official (unless a penalty carries over) rather than the 40 yard line.

**Ball Handling**

1. Ball boys will be discouraged from entering the field. Every effort should be made to obtain a ball from the BB at the sideline and relay it to the Umpire. Ball boys should not have to come any further onto the field than the bottom of the numbers.
2. Footballs are to be relayed in an underhanded manner.

**Halftime**

Officials have the option of remaining on the field or retiring to the dressing room.

If the crew remains on the field during halftime, they are to retire to the visitor's bench area.

If the crew retires to the dressing room, they are to remain on the field until the teams have completely left the field. The crew shall return to the field before either team returns, or 6 minutes before the second half kickoff, whichever happens first.



## Signals

Give stationary signals (except when necessary for stopping the clock).

Incomplete pass signals are to be a single wave of the arms, shoulder height, parallel with the ground. Do not follow-up with a time out signal.

Do not mirror any signal or whistle unless it is to stop the clock.

Aside from the BJ giving the “Delay of Game” signal, no penalty type signals are to be given by any official except for the referee.

With respect to 5 yard penalty/first down situations, HL will signal position of the down marker vs. tape on chain with one hand on appropriate leg. (Marker is either beyond or behind tape. In keeping it simple, the HL represents the tape.)

## Post Season Assignments

POST SEASON assignments will be strongly based on official’s ratings during the year plus clinic/scrimmage attendance, HUDL review.

PER NCHSAA, you cannot work beyond the second round if you worked a championship game in the year before.

PER NCHSAA, only officials who have attended the NCHSAA rules clinic, made an 80% or better on the NFHS exam, and are Class 1 or 2 officials are eligible for the playoffs.

REGIONAL finals and Championship games will use a 7-man crew. NCAA mechanics will be used for 7-man crews.

## Field Goal - Back Judge / Line Judge

Witness attempt.

Verbalize “Good” or “Bad” and confirm with eye contact, avoid head nod.

Step up one yard from the end line with shoulders parallel to it.

If “Good”, give signal (5) in unison and hold for approximately 3 seconds, then drop arms on a verbal “OK” by BJ.

If “Bad”, give a single (10) in unison, one time.

## Miscellaneous

Following a try for point, the officials shall briefly huddle and confirm the score, penalty assessment if any, and relay information to the wing officials for the coaches if necessary.

Initial position of wing officials prior to a free kick is the 25 yard line of receiving team, then clear the sideline at the 45 second whistle notice.

If finger whistles are used, no “half signals” are to be given.

Dead ball penalties prior to the snap:

Wing officials are to toss the flag on the offending team’s side of the LOS.


No preliminary signal to be given by R, just the final signal.

Referee and Umpire are to back away from the ball after the RFP signal, never turn your back to the ball.

Referee does not go to the OB spot of a short kick. (Pg. 43)



**Inner Piedmont Football Officials  
Game Evaluation Report**



**Football Officials**

A = "Above Average"  
B = "Average" or "Yes"  
C = "Improvement Needed" or "No"

Maximum Score = 150

Location: \_\_\_\_\_

Home: \_\_\_\_\_

Visitors: \_\_\_\_\_

Date: \_\_\_\_\_

Score: Home \_\_\_\_\_ Visitor \_\_\_\_\_

Game Length: \_\_\_\_\_

Referee: \_\_\_\_\_

Umpire: \_\_\_\_\_

Linesman: \_\_\_\_\_

L. Judge: \_\_\_\_\_

B. Judge: \_\_\_\_\_

Difficulty: \_\_\_\_\_

	Referee			Umpire			Linesman			L. Judge			B. Judge		
	A	B	C	A	B	C	A	B	C	A	B	C	A	B	C
<b>Fitness &amp; Appearance - 15</b>															
Clean Uniform & Shoes		2	1												
Physically Fit	5	4	2												
Overweight		-5													
Posture & Appearance	3	2	1												
Stamina Throughout Game	5	3	1												
<b>Pre-Game / Coin Toss - 5</b>															
Proper Pre-Game Duties		2	1												
Coin Toss Mechanics		3	2												
<b>Signals, Whistle &amp; Flag - 15</b>															
Pre-Snap Signals	5	3	2												
Proper Whistle / Flag Use	5	3	2												
Signal Use & Emphasis	5	3	2												
<b>Mechanics &amp; Positioning - 40</b>															
Mechanics & Keys Knowledge	17	14	10												
Time Outs / Dead Balls	3	2	1												
Starting Position	5	3	2												
Play Coverage	5	3	2												
Final Positioning	5	3	2												
Overall Hustle	5	3	2												
<b>Judgment / Decisiveness - 50</b>															
Proper Rules Application	10	8	6												
"No-Call" Judgment		5	2												
Common Sense & Judgment	20	15	10												
Player Safety Awareness		5	2												
Feel for the Game and Official's Role	10	8	5												
<b>Communication &amp; Professionalism - 25</b>															
Effective Communication - Players		5	2												
Effective Communication - Coaches		5	2												
Effective Communication - Crew	5	3	2												
Positive Attitude		5	2												
Overall Conduct	5	3	1												
<b>Total Rating Score</b>	Referee			Umpire			Linesman			L. Judge			B. Judge		

The purpose of the evaluation process is important for our Association, our Officials and our Member Schools. Benefits include:

1. Follow weekly progress and trends of each official.
2. Insure that we are sending the best product to our customers (schools) each week.

Officials will be evaluated by a Technical Advisor on varsity game nights. An evaluation report will be completed by the TA and will be forwarded to each member of the crew. A penalty report will accompany all games viewed live by the TA.

Evaluation scores can range from 52 (lowest possible) to 150 (highest possible). An average score of 130 for the season will make an official "Championship Game" eligible. The final selection of a Championship Official will include the following factors:

- Evaluation Scores
- HUDL Observations
- NCHSAA Classification
- NFHS Test Score
- Scrimmage and Clinic Attendance
- Previous Playoff Experience
- Professionalism & Attitude

Evaluated By: \_\_\_\_\_





## Inner Piedmont Football Officials Tech. Advisor Video Review Report

<b>Location:</b>	Hometown, NC	<b>Game Date:</b>	August 30, 2013
<b>Home / Score:</b>	Home HS - 17	<b>Visitor / Score:</b>	Visitor HS - 10

Game Officials	
<b>Referee:</b>	Roger Referee
<b>Umpire:</b>	Orville Umpire
<b>Head Linesman:</b>	Larry Linesman
<b>Line Judge:</b>	Jerry Judge
<b>Back Judge:</b>	Barry Back

Qtr.	Run Time or Clip #	Notable Play or Penalty
1	4	HL – Good spot, confusing signals.
1	9	R & BJ – Proper positioning on scrimmage kick
1	20	BJ – Do not give incomplete pass signal on the run. It gives the appearance that you're not in position whether you are or are not. Hit the whistle, stand stoic, and give the signal once.
1	22	BJ – Another example, signals are given in a stationary position. Stopping the clock in a running fashion is acceptable in order to get attention for clock management. All other signals are during a dead ball interval and should be given stationary.
1	24	R – Avoid turning your back to ball and players after the RFP signal.
1	26	LJ – Excellent call on PF-Face Mask. Good job holding spot for end of run. Avoid giving any visible signal to the R. R – Very definitive signals here. Good execution.
1	29	R – Good flag. It's apparent that the players are a little testy.
		1 <sup>st</sup> . Quarter Recap – Good hustle by everyone and positioning is good. U is varying position well, HL/LJ using bottom of the numbers effectively. BJ in position on every play. Players appear to be close to being out of control.
2	36	BJ – Much better signal, stationary position & definitive signal. Looks much better.
2	38	R, U, LJ – Good LTG sense. Everyone knew where the line to gain was and the signals were spot on in killing the clock.
2	39	Based on how this game was proceeding, should we have had a flag here?
2	40	LJ & BJ – Good coverage of play. Bean Bag needed here. Team possession signal as well.
2	48	BJ – Good coverage, anticipated the play well and adjusted. U – Too far into the field of play. Bottom of numbers only. On free kicks, your mechanics are that of a wing, sideline responsibility.
2	51	HL – You had to move around box to get to play. Sideline, including chain crew, needs to be kept clear so you can do your job.
2	57	HL – Great job. Came in past the numbers as prescribed to make & sell the call.

HUDL videos are not to be shared with other schools, coaches, or athletes. (Penalty: Suspension for remainder of season.)

HUDL videos are not to be posted on YouTube or any other online medium. (Penalty: Suspension for remainder of season.)

HUDL videos will be available to you after the school uploads them and I release them to you. (Coach Todd) Remember that schools will shoot & produce their game video differently. Some will have high quality, some not so much, and some not at all. HUDL games will be available until they are pulled due to storage capacity on the site.

The purpose of an “observation” is for the benefit of the official so he can improve his mechanics using video review and critique. The use of video review also catalogs an officials progress during the season.

Each play is reviewed with the purpose of identifying an official’s performance within a 6-12 second interval, that’s it. Nothing is assumed, nothing is implied. When appropriate the TA will highlight both positives and negatives. (Think of it as a practice exam.)

Game video will be provided to you by the RSO on HUDL when either school uploads the contest. Once you receive a video notification, a Technical Advisor will be assigned to observe it. He will review the game, complete his report, then send it to the crew and the RSO. The videos will remain on the HUDL site until the server reaches capacity. At that point the oldest games will be dropped.



## Penalty Reports and Their Value

The purpose of the penalty report is to assist the crew when reviewing their game on HUDL. It also helps track the quality of each penalty flag thrown (or not thrown). When Technical Advisors attend a game, they will be charting penalties. The TA will submit the penalty report to the crew with their evaluation report.

All penalties are noted on the report and graded. Penalties are to be considered "Quality" or not.

A quality call (QC) is regarded as a call or no-call that is made in the spirit/intent of the rule. (IE: properly interpreted)

QC Example: Holding at the point of attack

QC Example – No Call: Incidental contact between receiver and defender.

If a play is notable, either positive or negative, that play is recorded on the report.

If a play is in "Question", it is to be recorded as such. A "Question" play is usually a play that the official needs to review for a number of reasons. (Ex: Missed call, lack of proper positioning, improper mechanics, etc.) The TA does not need to tell the official what he (TA) saw, but just inform the official to review the play. Your job is to review the game film and decide why the call was in question.

## Penalty Reports by Officials

Clock operators that are scheduled by the IPFO are to maintain a penalty report for the officiating crew. The purpose of the report is for referencing times and events when reviewing the game film.

New officials are encouraged to attend games and chart penalties for the crew, attend pre-game meetings, and join in on the varsity experience. They will be in an officials uniform and will walk the sidelines.

1. The referee is to notify both coaches that this is an official in training and has no duties other than charting penalties. In the event of an injury, he is not authorized to work the contest if an official goes down.
2. Officials are to chart penalties and refrain from discussions with team players, coaches, media, etc. "Loose lips sink ships!"
3. An interested new official should send me an email each week indicating that you're available and I'll schedule you to a local school. You'll be given the referee's email and phone number so you can report for duty.

Qtr	Time	Team	O/D	Penalty	Number	A/D	Official

Location:		Date:	
Home / Score:		Visitor / Score:	

<b>Game Officials</b>	Qtr: Quarter
Referee (R):	Time: Time of penalty
Umpire (U):	Team: Penalized team H or V
Head Linesman (H):	O/D: Offense or defense
Line Judge (L):	Penalty: Foul or Infraction
Back Judge (B):	Number: Player or coach penalized
	A/D: Accepted or declined
	Official: Use corresponding letter

Compiled By: \_\_\_\_\_



## Ten-Points to Follow for a Successful Season Ahead

1. Continue to study the rule book as the season progresses.
2. Strive for 90%+ on NFHS exam. (Aug. 18-22)
3. Don't develop bad habits if you're working football at a lower level.
4. Study game films on HUDL. Look for strengths to keep, weaknesses to improve on.
5. Don't ignore the contents of your game evaluations. Outside eyes will give you a better understanding of your proficiency as witnessed by others.
6. Keep your Arbiter availability current, minimize as many close-outs as possible.
7. Ask questions.....offer solutions.....assist others. Questions and interactions are welcomed.
8. Acclimate yourself to the early season heat, then maintain your physical fitness and mental focus as the season progresses.
9. Senior Officials, provide the RSO with feedback on young official's performance.
10. Continue to enjoy what you're doing.



**THE ERROR OF THE ROOKIE OFFICIAL IS TO BELIEVE THAT INTELLIGENCE IS A GOOD SUBSTITUTE FOR EXPERIENCE, WHILE THE ERROR OF THE OLDER OFFICIAL IS TO BELIEVE THAT EXPERIENCE IS A SUBSTITUTE FOR INTELLIGENCE.**