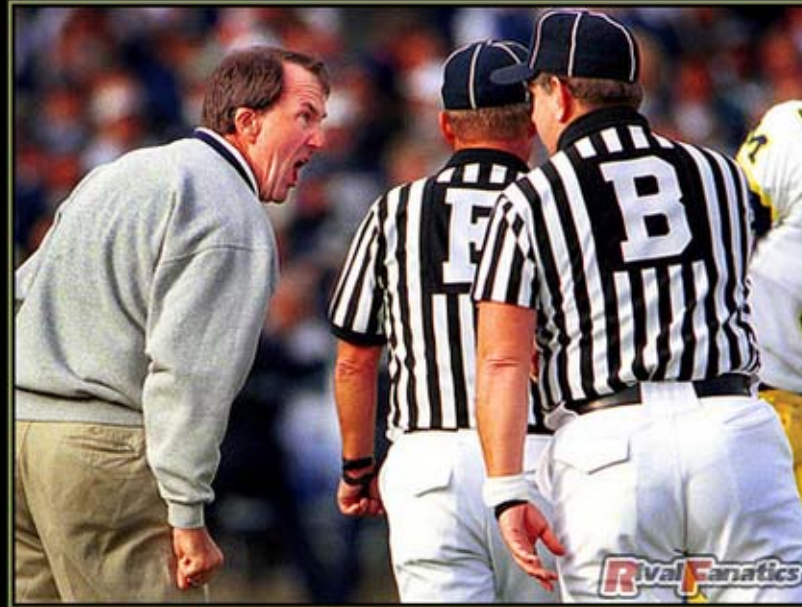


# WELCOME OFFICIALS

INAUGURAL ASSOCIATION MEETING - 2013

INNER PIEDMONT FOOTBALL OFFICIALS





# BLAME

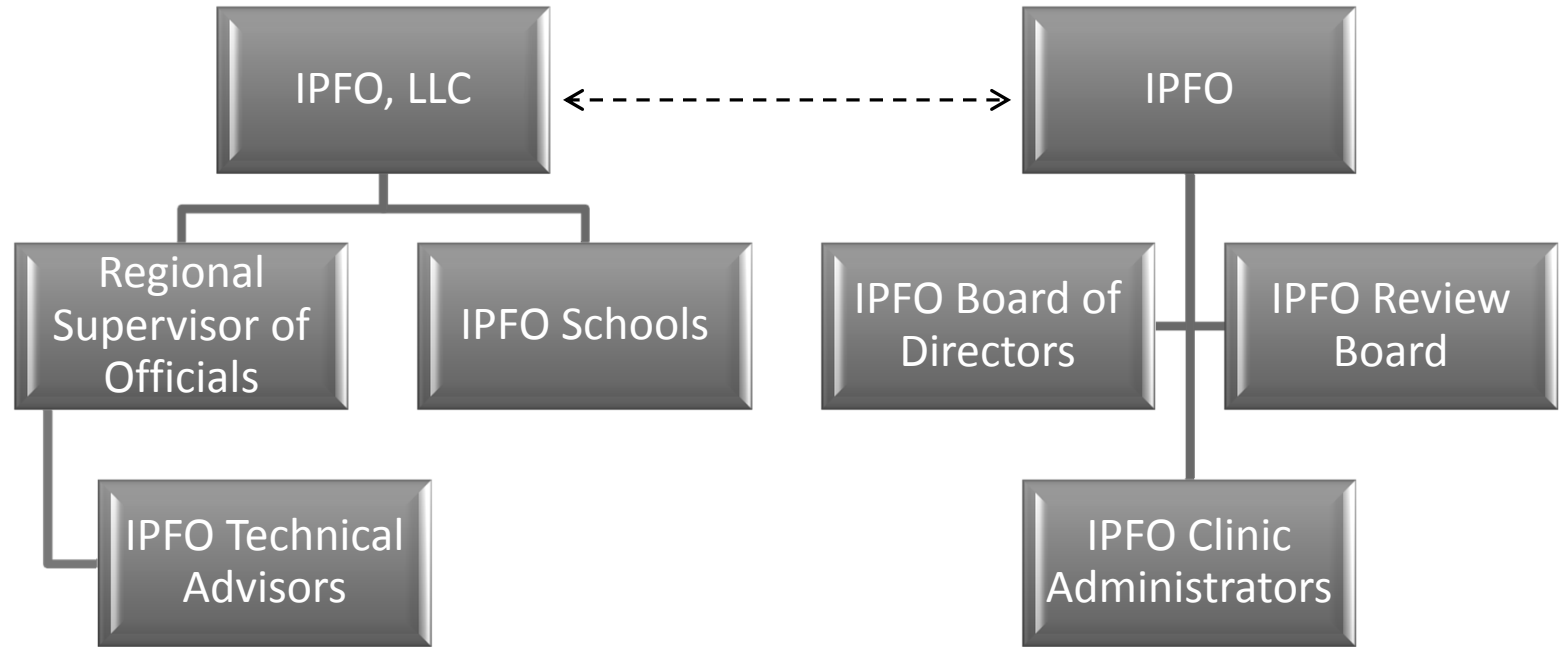
THE SECRET TO SUCCESS IS KNOWING WHO TO BLAME FOR YOUR FAILURES.

## 5 GOALS & EXPECTATIONS FOR OUR ASSOCIATION

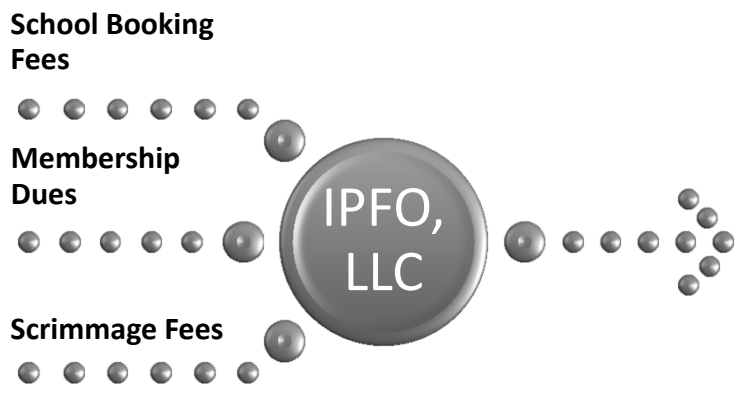
- Goal - Establish the most respected football officials association in NC.**
- Goal - Provide our schools with a superior officiating product.**
- Goal - Provide our officials with the tools and resources necessary to succeed.**
- Expectation - Professional approach to our avocation.**
- Expectation - Exercise personal responsibility & accountability.**



Association Structure & Relationships



Association Financial Structure



School Booking Fees	Association Dues & Scrimmage Fees
Regional Supervisor of Officials	Arbiter License Fees
	Clinic Administrators
	Misc. Expenses
	Technical Advisors
	Taxes
	Training
	Web Site



**Balance Sheet**

Inner Piedmont Football Officials, LLC  
 Balance Sheet - Accrual Basis As of July 31, 2013

Jul 31, 2013

**ASSETS**

**Current Assets**

**Checking/Savings**

Peoples Bank 18,920.29

**Total Checking/Savings 18,920.29**

**Accounts Receivable**

Accounts Receivable 675.00

**Total Accounts Receivable 675.00**

**Total Current Assets 19,595.29**

**TOTAL ASSETS 19,595.29**

**LIABILITIES & EQUITY**

**Equity**

**Net Income 19,595.29**

**Total Equity 19,595.29**

**TOTAL LIABILITIES & EQUITY 19,595.29**

**Constitution & By-Laws**

The IPFO Constitution & By-Laws are posted on the IPFO web site. Please take time to review the contents so you are familiar with how your association functions.

[www.ipfo.us/policies](http://www.ipfo.us/policies)

**Profit & Loss**

Inner Piedmont Football Officials, LLC  
 Profit & Loss - Accrual Basis January through July 2013

Jan - Jul 2013

**Ordinary Income/Expense**

**Income**

**Association Income**

**Booking Fee - JV Football 4,500.00**

**Booking Fee - Varsity Football 6,125.00**

**Membership Dues 11,755.00**

**Scrimmage Fees 100.00**

**Total Association Income 22,480.00**

**Total Income 22,480.00**

**Expense**

**Advertising and Promotion 1,341.00**

**Bank Service Charges 26.30**

**Computer and Internet Expenses**

**Web Site 69.46**

**Total Computer and Internet Expenses 69.46**

**Dues and Subscriptions**

**ArbiterSports License Fees 754.00**

**Total Dues and Subscriptions 754.00**

**Insurance Premium Expense 155.00**

**Postage and Delivery 46.00**

**Professional Fees**

**Legal Fees 492.95**

**Total Professional Fees 492.95**

**Total Expense 2,884.71**

**Net Ordinary Income 19,595.29**

**NET INCOME 19,595.29**



**Board of Directors**

**Regional Supervisor of Officials:**

Wally Todd

**School System Administrator:**

Richard Armstrong, Jr.

Athletic Director, Iredell-Statesville Schools

**School Administrator:**

Marc Payne

Athletic Director, Ashe County High School

**Head Coach:**

Matt Beam

Burns High School

**Head Coach:**

Tom Harper

Fred T. Foard High School

**Official – North/West Region (2016):**

Mike Borders

Bi-County Clinic

**Official – North/West Region (2015):**

Eddie Simmons

Boone Clinic

**Official – South/East Region (2016):**

Burt Broadway

Gastonia Clinic

**Official – South/East Region (2015):**

Darryl Shope

Statesville Clinic

**\*\*Secretary/Treasurer:**

Terry Cody

Hickory Clinic

**Clinic Administrators / Grievance Committee**

Chris Eldreth - Chairman

Dean Burgess

Jim Coleman

Steve Culbertson

Chris Huskey

Jimmy Martin

**Review Committee**

Don Bias – Chairman

Dusty Haynes

Tom Horner

Crisp Lipscomb

**Technical Advisors**

Bill Cline

Gary Harding

Tony Jordan

David Williams

Billy Alton - Advisor

**Education Committee**

Linc Pauley – Chairman

Michael Carroll

Rick Curtis - Webmaster

Roger Teeple



## Election for Board of Directors

Board members will serve two-year terms, alternating each year. Two members will be serving a three year term in this initial election.

### North/West Region

Eddie Simmons (2015)  
Boone Clinic

Mike Borders (2016)  
Bi-County Clinic

### South/East Region

Darryl Shope (2015)  
Statesville Clinic

Burt Broadway (2016)  
Gastonia Clinic

## Official's Recognition

### 25 Years of Service

Byron Alexander  
John Deas  
Wendell Fox

### Post Season Assignments

Richard Harris – East/West Game – Umpire  
Michael Carroll – Shrine Bowl - Umpire

## Scholarship Awards

North State has given us \$3,000.00 from the Chuck Clemmons Scholarship Fund to award our officials' children this season. We as an association will have to decide on how to start our own fund if we choose to. We will give out 12 scholarships at \$250.00 each.

### Possible funding:

- Percentage of profits from membership dues & scrimmages.
- Fund raising events.
- Contributions from donors.

### We will need to form a scholarship committee to do the following tasks:

- Identify a mechanism for us to hold/invest money for this cause while sheltering as much of it as possible from annual taxes.
- Develop revenue producing streams that will fund the program.
- Develop eligibility rules and pay-out policies for the program.
- Name the program.



Association Games per Week

Week	Varsity	JV
1 (8/23)	<b>*26</b>	<b>8</b>
2 (8/30)	20	22
3 (9/6)	22	15
4 (9/13)	19	18
5 (9/20)	<b>15</b>	<b>9</b>
6 (9/27)	22	22

Week	Varsity	JV
7 (10/4)	23	21
8 (10/11)	23	22
9 (10/18)	<b>24</b>	21
10 (10/25)	<b>24</b>	21
11 (11/1)	22	21
12 (11/8)	23	22

**\*August 23 – 141 Assignments (includes 11 clock operators)**



## Games

482 Games – 2,568 Assignments - \$167,700 in Official's Fees  
 167 Registered Officials (JV & Varsity) - August 23 – 141 Assignments

Game Fees: Varsity - \$70.00 ea.  
 JV - \$60.00 ea.  
 Freshman / JV – Three Man Crew with Clock - \$70.00 ea.  
 \*\*All clock operators will get a full game fee for both JV & varsity.

### Location Notices:

Community School of Davidson – Home games will be played at Hopewell HS & North Mecklenburg HS  
 Pine Lake Prep - Home games will be played at Northwest Cabarrus HS  
 Avery County – (3) JV games

### Confirm Game Dates & Times:

Southlake Christian Fresh./JV – 4:00PM start on 9/26; all others at 4:30PM  
 South Caldwell JV – 6:00PM start on 9/12  
 NC School for the Deaf – 6:00PM start on 9/12; 2:00PM start on 10/5

## Assigning

If you looked at the weekly games chart carefully, you saw that there are plenty of games and assignments for everyone. We average 23 varsity and 21 JV games weekly. Every effort will be made to have the games scheduled out two-weeks in advance. However the final two weeks of the season may be scheduled only a week ahead. Conference standings and playoff implications will dictate the schedule.

Assignments will be “regionalized by clinic” for JV football as much as possible, however regions are not clinic specific. Example, Hickory will be assigned to Iredell & Wilkes Counties to cover JV games. West Lincoln HS could see 4 different clinics doing their JV games. (Bi-County, Gastonia, Morganton, Hickory)

Varsity assignment travel will be “ad infinitum”. Crews may be assigned as a “clinic crew” or an “association crew.” Game locations, position needs, games declined by other officials, and game importance may dictate the use of an “association crew” rather than a “clinic crew”. Early in the season, our intent is to impress not only our member schools, but those that come in from different regions. Everyone is expected to be an ambassador for our association, and some of you may be traveling to a specific location just for that very purpose.

Operating the clock should not be considered as “demeaning”. There will be cases when experienced officials will be assigned as clock operators so younger officials can gain experience at the varsity level. This will take place early in the year.

I'm very cognizant of the number of games each official receives during the season, and the assignments will average out. Everyone will have a night or two off during the season, either JV, varsity or both.





### Arbiter Use, Game Acceptance & Notification

BE sure to keep closeouts up to date. Be sure to close out all days you can't work, not just Thursdays or Fridays.

At the latest, ACCEPT/DECLINE games by Sunday evening at 6:00PM, the week end before the game or it will be recinded.

DECLINED games must have a reason given to insure that the official has not accidentally entered the wrong accept/decline tab.

NOTIFICATION to referee must be made no later than 96 hours before game time.

1. Notification can be made in the form of phone call or email.
2. Emails must be acknowledged by the referee or they are invalid.
3. Referee is to try to contact official. If no contact is made, notify the RSO and the official will be replaced and will forfeit his next scheduled game assignment in kind.

**POSTPONEMENTS:** You are still responsible for your assignment. If you cannot honor the commitment when rescheduled, please notify the RSO immediately so a replacement can be secured.

**RAIN THREAT:** Referee contact the school after 2:00PM and talk directly to the AD, Principal, or Head Coach. If postponed, contact the RSO first, the crew second.

### HUDL

HUDL is a tool for each official to use so he can view strengths and weaknesses.

HUDL videos are not to be shared with other schools, coaches, or athletes. (Penalty: Suspension for remainder of season.)

HUDL videos are not to be posted on YouTube or any other online medium. (Penalty: Suspension for remainder of season.)

HUDL videos will be available to you after the school uploads them and I release them to you. (Coach Todd) Remember that schools will shoot & produce their game video differently. Some will have high quality, some not so much, and some not at all.

HUDL games will be available for no more than 3 weeks before they are pulled due to storage capacity on the site.

### Arrival at School, Dress , Pregame, Post-Game

OFFICIALS are to be at the school no later than 90 minutes before scheduled kick-off with pregame to begin no later than 60 minutes before kick-off.

NO FACIAL HAIR other than a moustache.

OFFICIALS street attire shall be considered business casual. (Shirt with collar, slacks, leather shoes, socks)

OFFICIALS are encouraged to wear a sports coat during playoffs, but will be mandatory for 4<sup>th</sup> round games.

JACKETS are not to be worn while officiating, but may be worn onto the field.

OFFICIALS are to gather together following the game on the field, then trot off the field as a group. Do not walk off.

AN OFFICIAL that either ejects or disqualifies a player or coach is responsible for reporting the incident to the NCHSAA within 24 hours or one working day following completion of the game. A \$50.00 fine is imposed by the NCHSAA if not completed on time.

### Post Season Assignments

POST SEASON assignments will be strongly based on official's ratings during the year plus clinic/scrimmage attendance, HUDL review.

PER NCHSAA, you cannot work beyond the second round if you worked a championship game in the year before.

PER NCHSAA, only officials who have attended the state rules clinic, made an 80 or better on the exam, and are Class 1 or 2 officials are eligible for the playoffs.

REGIONAL finals and Championship games will use a 7-man crew. NCAA mechanics will be used for 7-man crews.



**Pg. 9 – I. Crew Assignments**

**D. 1. Line Judge will accompany the Linesman and assist checking line-to-gain equipment and meet crew.**

**E. Back Judge will secure game balls for referee's approval and meet with ball persons.**

**Pg. 38 – LINESMAN & LINE JUDGE**

**1 - g – When ball goes to opposite side:**

Move down sideline until certain there will be no reverse or counter.

Observe action on linebackers and backside pursuit. If necessary, pinch in from the sideline no further than the bottom of the numbers.

**Halftime**

Officials have the option of remaining on the field or retiring to the dressing room.

If the crew remains on the field during halftime, they are to retire to the visitor's bench area.

If the crew retires to the dressing room, they are to remain on the field until the teams have completely left the field. The crew shall return to the field before either team returns, or 6 minutes before the second half kickoff, whichever happens first.

**Field Goal – (Back Judge / Line Judge)**

Witness attempt.

Verbalize "Good" or "Bad" and confirm with eye contact, avoid head nod.

Step up one yard from the end line with shoulders parallel to it.

If "Good", give signal (5) in unison and hold for 3 seconds, then drop arms.

If "Bad", give a single (10) in unison.

When meeting with head coaches, the Referee & Umpire shall introduce the wing official responsible for that sideline. The wing should then retreat back to his pre-game duties.

**Coin Toss Ball Handling**

If the coin toss winner has been pre-determined:

The Back Judge will bring the kicking team ball to the hash. After the Referee aligns the captains and signals the winner's option, the Back Judge will briskly place the football at K's 40 yard line, then return to the officials huddle.

If the coin toss winner is decided on the field:

The Back Judge and Line Judge will bring a football from their team's sideline. After the Referee aligns the captains and signals the winner's option, in unison the BJ and LJ shall properly position his football:

The official holding K's ball will briskly place the football at K's 40 yard line.

The official holding R's ball will briskly take the ball to the sideline.

Both officials will then return to the officials huddle.

Ball boys will be discouraged from entering the field. Every effort should be made to obtain a ball from the BB at the sideline and relay it to the Umpire. Ball boys should not have to come any further onto the field than the bottom of the numbers.



**Evaluation Purpose & Process**

The purpose of the evaluation process is important for our Association, our Officials and our Member Schools. Benefits include:

1. Follow weekly progress and trends of each official.
2. Insure that we are sending the best product to our customers (schools) each week.

Officials will be rated each week by a Technical Advisor if possible, either live on Friday night, or on video over the weekend if the quality of the video is satisfactory. An evaluation report will be completed by the TA and will be forwarded to each member of the crew. A penalty report will accompany all games viewed live by the TA. If the quality of the video is inconclusive, or the school failed to provide one, you will be notified by myself or the TA that your game will not be evaluated. Games evaluated live /on site, will be given twice the weight of one evaluated on video.

Example: 4.5 score live, 3.8 score video:  $(4.5 \times 2) + 3.8 = 12.8 / 3 = 4.266$       3.9 score live, 4.4 score video:  $(3.9 \times 2) + 4.4 = 12.2 / 3 = 4.06$

Note: The development of the evaluation form is a gathering of several qualities used by different officiating groups. These qualities are what we want our officials to strive towards.

**Fitness & Appearance**

1. Official is physically fit. \*An overweight official can never be rated higher than 3.5 in this category.
2. Uniform is clean and neat in appearance. Referee's hat is "as-new" white. Shoes are clean and shined. Flag not visible if tucked in pocket.
3. Official is well groomed.

**Game Control/Poise/Confidence**

1. Assures player safety.
2. Maintains an effective game tempo.
3. Handles unusual situations.
4. Effectively handles football between downs.

**Professionalism/Communication**

1. Demonstrates effective teamwork with crew.
2. Acts in a dignified manner.
3. Demonstrates effective verbal and non-verbal skills.
4. Communicates effectively with players, coaches, and support staff.

**Coverage & Positioning**

1. Hustles, both during and between downs.
2. Gets in proper position.
3. Continues backside officiating.

**Decisiveness/Judgment Calls**

1. Uses proper emphasis on calls and signals.
2. Demonstrates decisiveness.

**Knowledge of Rules/Mechanics**

1. Applies rules accurately.
2. Understands and demonstrates proper mechanics.
3. Understands and demonstrates proper officiating philosophy.

**Sideline Control (Wing Officials Only)**

1. Keeps coaches in box as per NFHS rules.
2. Properly applies sideline warning if necessary.
3. Communicates with coaching staff when required.





Ten-Points to Follow for a Successful Season Ahead

1. Continue to study the rule book as the season progresses.
2. Strive for 90%+ on NFHS exam. (Aug. 19-23)
3. Don't develop bad habits if you're working football at a lower level.
4. Study game films on HUDL. Look for strengths to keep, weaknesses to improve on.
5. Don't ignore the contents of your game evaluations. Outside eyes will give you a better understanding of your proficiency as witnessed by others.
6. Keep your Arbiter availability current, minimize as many close-outs as possible.
7. Ask questions.....offer solutions.....assist others.
8. Acclimate yourself to the early season heat, then maintain your physical fitness and mental focus as the season progresses.
9. Continue to check the IPFO web site for association information. [www.ipfo.us](http://www.ipfo.us)
10. Continue to enjoy what you're doing.



**“Perfection is not attainable, but if we chase perfection we can catch excellence.”**

Vince Lombardi

